

COMMISSIONERS' CONVERSATION ON CHILDREN

Greenburgh Public Library
June 22, 2023



INTRODUCTION

Ann Umemoto
Board President



DATA OVERVIEW

Limarie Cabrera

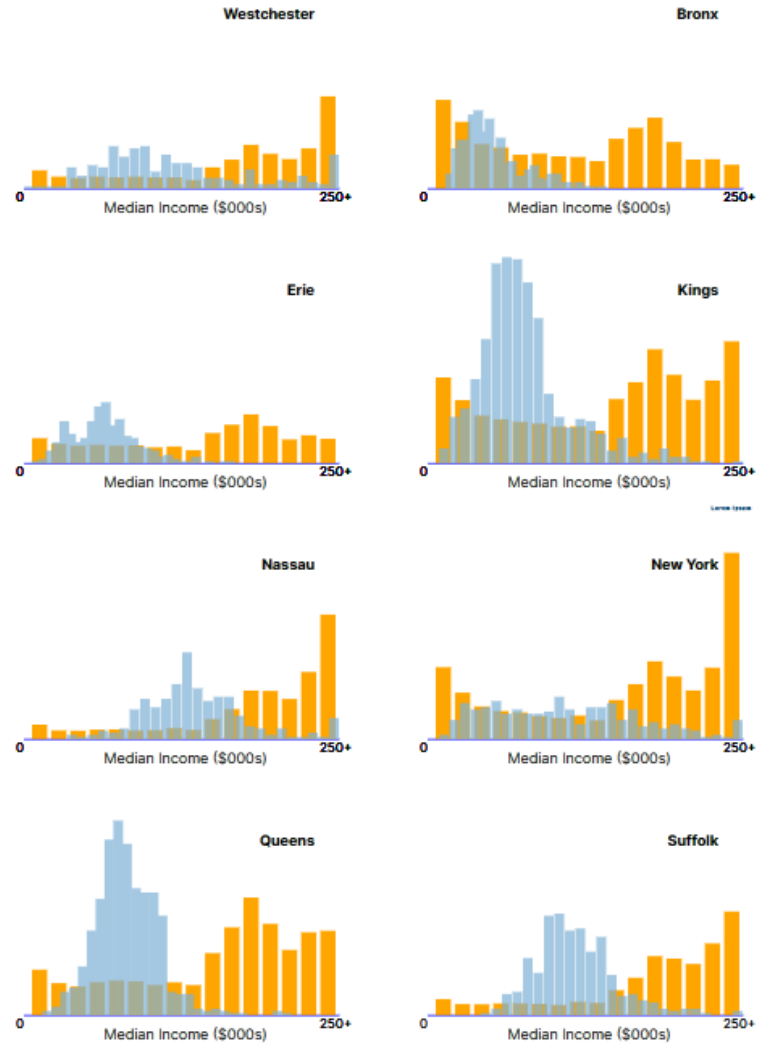
Director of Data, Operations & Finance



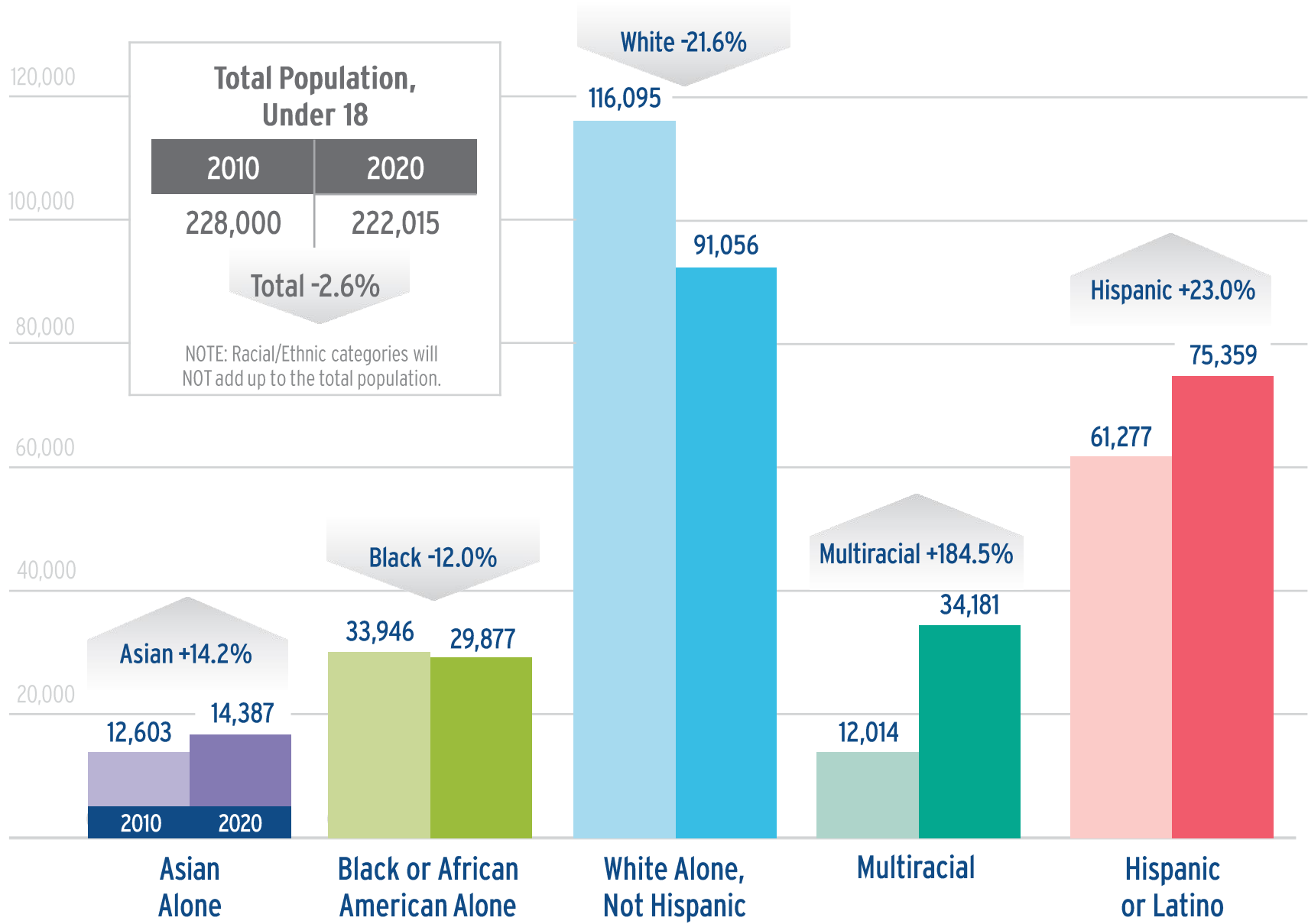
Show Tracts Charts:

Off On

Why do Westchester and New York have income distribution graphs that flatten when we consider household income by geography (blue bars), as compared to when we look at household income alone (orange bars)? In theory, one explanation could be there are more households in high income tracts. But that's not the case: the households per tract metric in Westchester doesn't really correlate with median tract income levels. Instead, it seems reasonable to assume that the Westchester graph flattens when we consider geography because Westchester has more diversity of income levels inside each of our tracts. In other words, Westchester, along with New York County, has less geographic concentration of high income households.



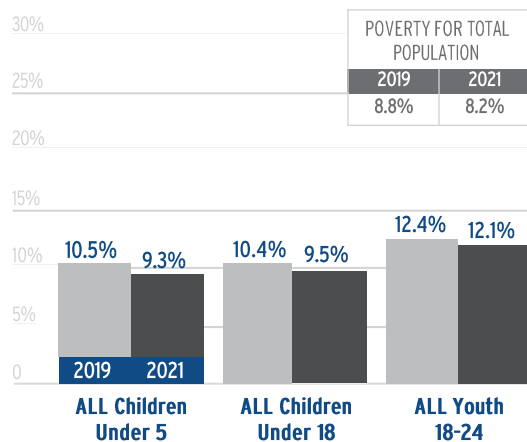
Shifting Demographics in Westchester's Population Under 18 2010 v. 2020



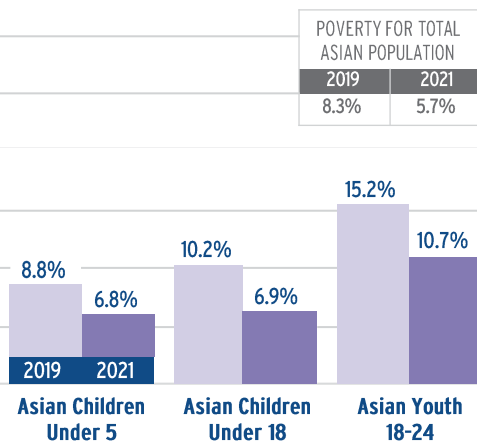
US Census Bureau, 2010 & 2020 Decennial Census. Under 18 Population calculated by using the differences in Tables P1 and P3, and Tables P2 and P4

Westchester Poverty Rates By Race/Ethnicity 2019 v. 2021

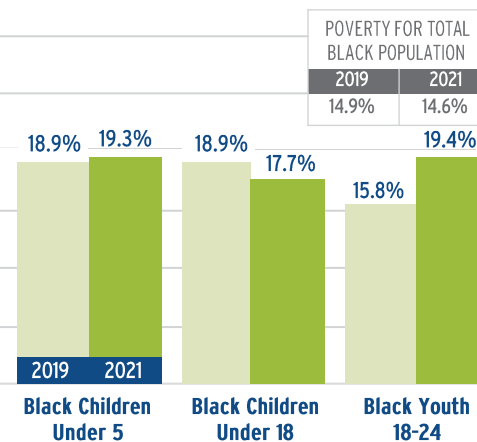
Poverty Rates – ALL Races Children & Youth



Poverty Rates – Asian Children & Youth

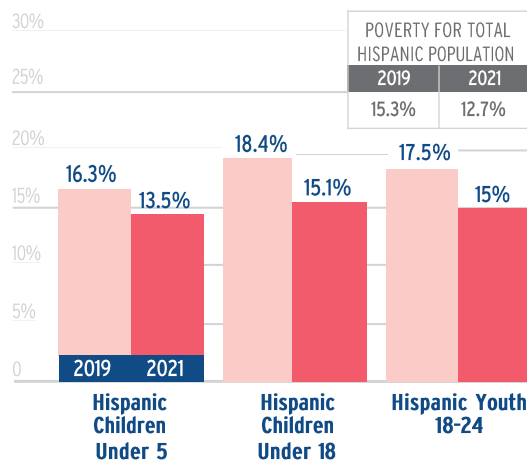


Poverty Rates – Black Children & Youth

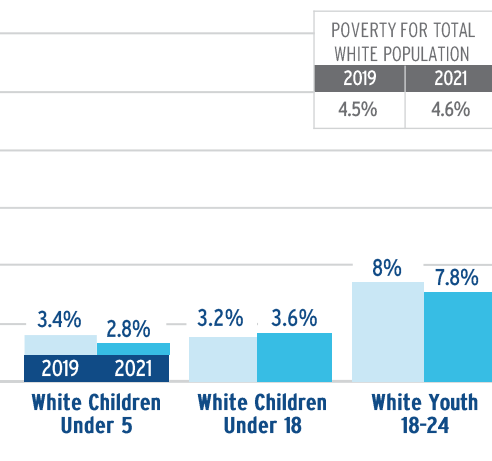


Black and Hispanic children continue to experience poverty at a higher rate than other children of different races/ethnicities.

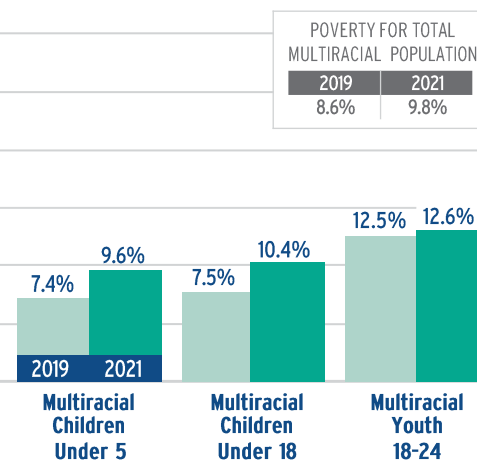
Poverty Rates – Hispanic Children & Youth



Poverty Rates – White, Non-Hispanic Children & Youth

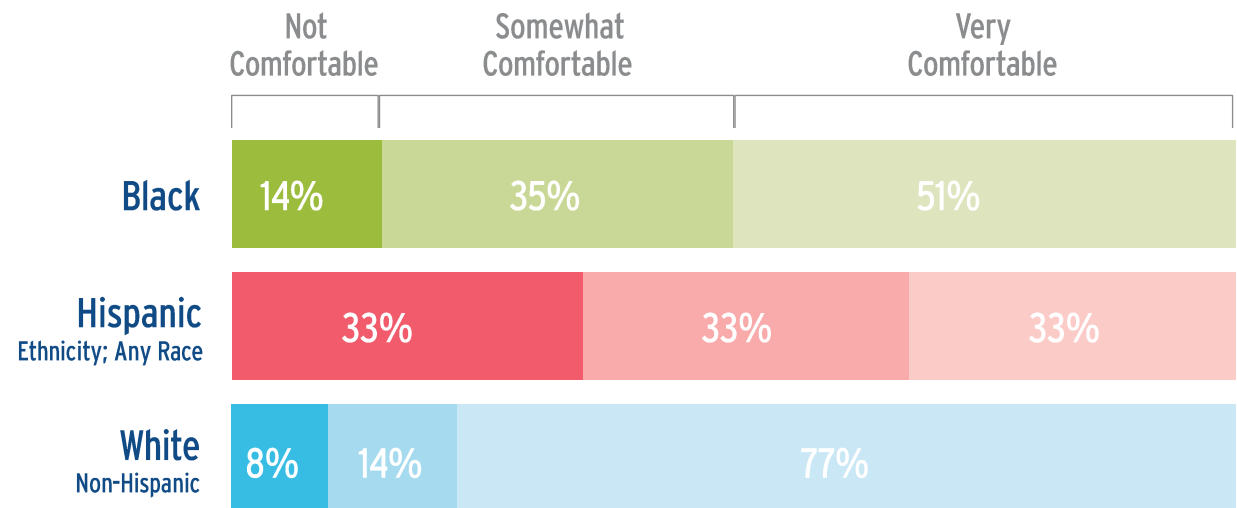


Poverty Rates – Multiracial Children & Youth



Digital Inequity creates barriers that affect children and families in their everyday life.

In a 2022 survey conducted by Pace University and Westchester Children's Association, people of color reported more difficulty making online health appointments.



COUNTY INTRODUCTION

Kenneth Jenkins

Deputy County Executive, Westchester County



COMMISSIONERS' CONVERSATION

MODERATORS

Allison Lake, *Executive Director*

Angel Gray, *Program & Policy Manager*

PANELISTS

Department of Community Mental Health

Commissioner Michael Orth

Department of Social Services

Commissioner Leonard G. Townes

Department of Parks, Recreation & Conservation

Commissioner Kathleen O'Connor

Department of Probation

Commissioner Rocco A. Pozzi

Westchester County Youth Bureau

Executive Director Dr. DaMia Harris Madden



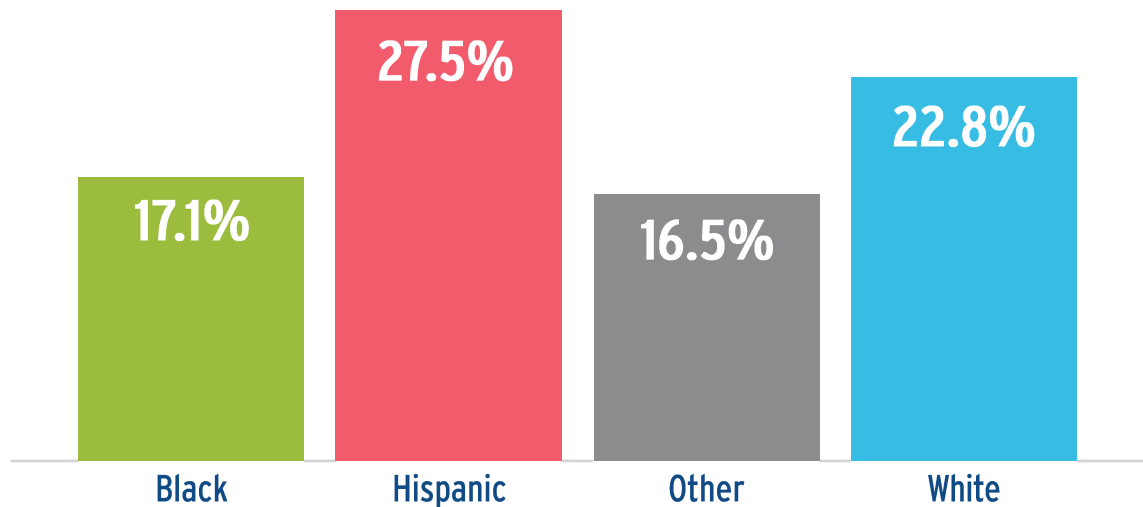
49%

of US youth ages 6-17 with a mental health disorder did not receive services in a given year.

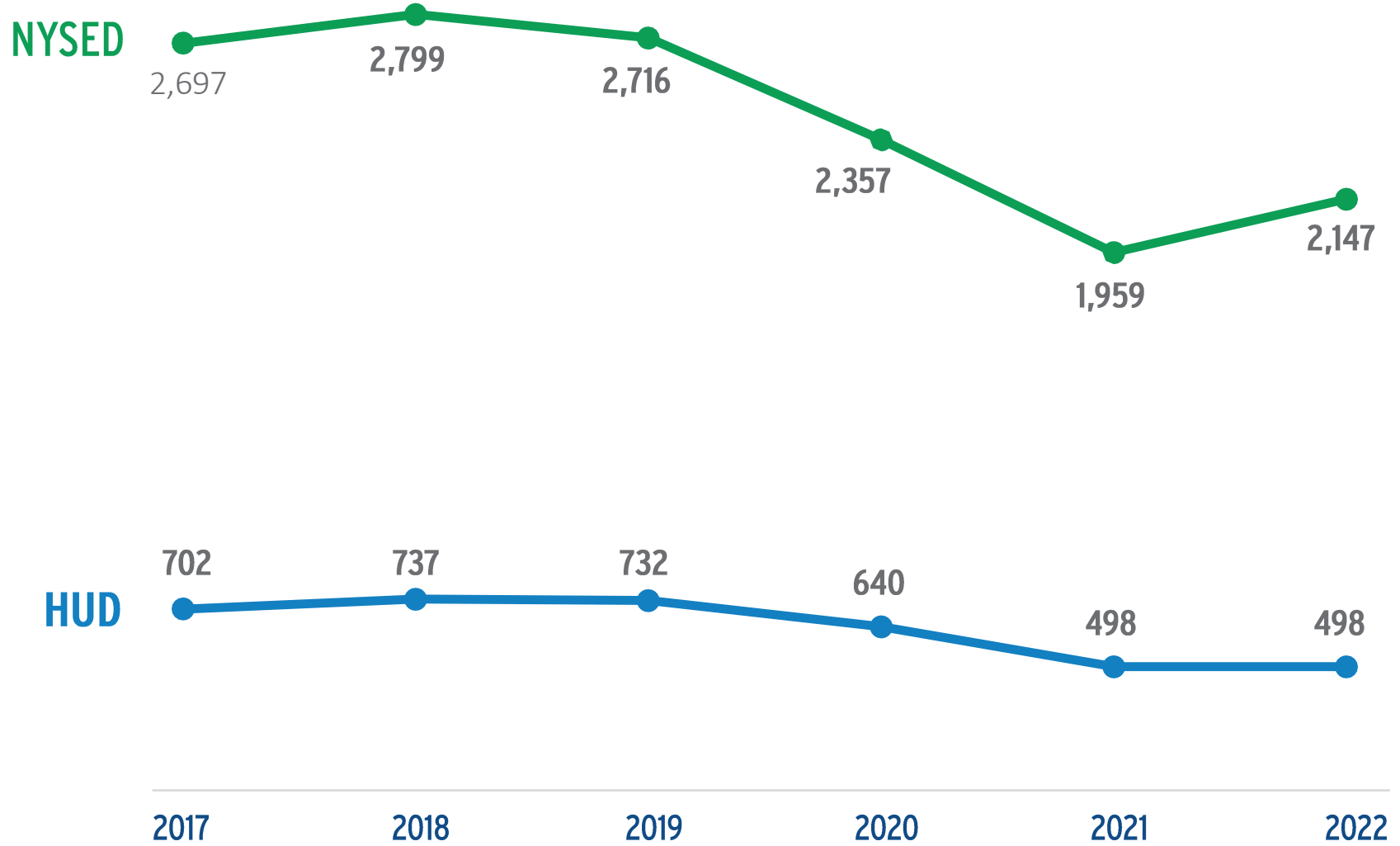
Reported Mental, Emotional, Developmental or Behavioral Problems By Race
New York State, Two-year average, 2019-2020

Race/Ethnicity Matters

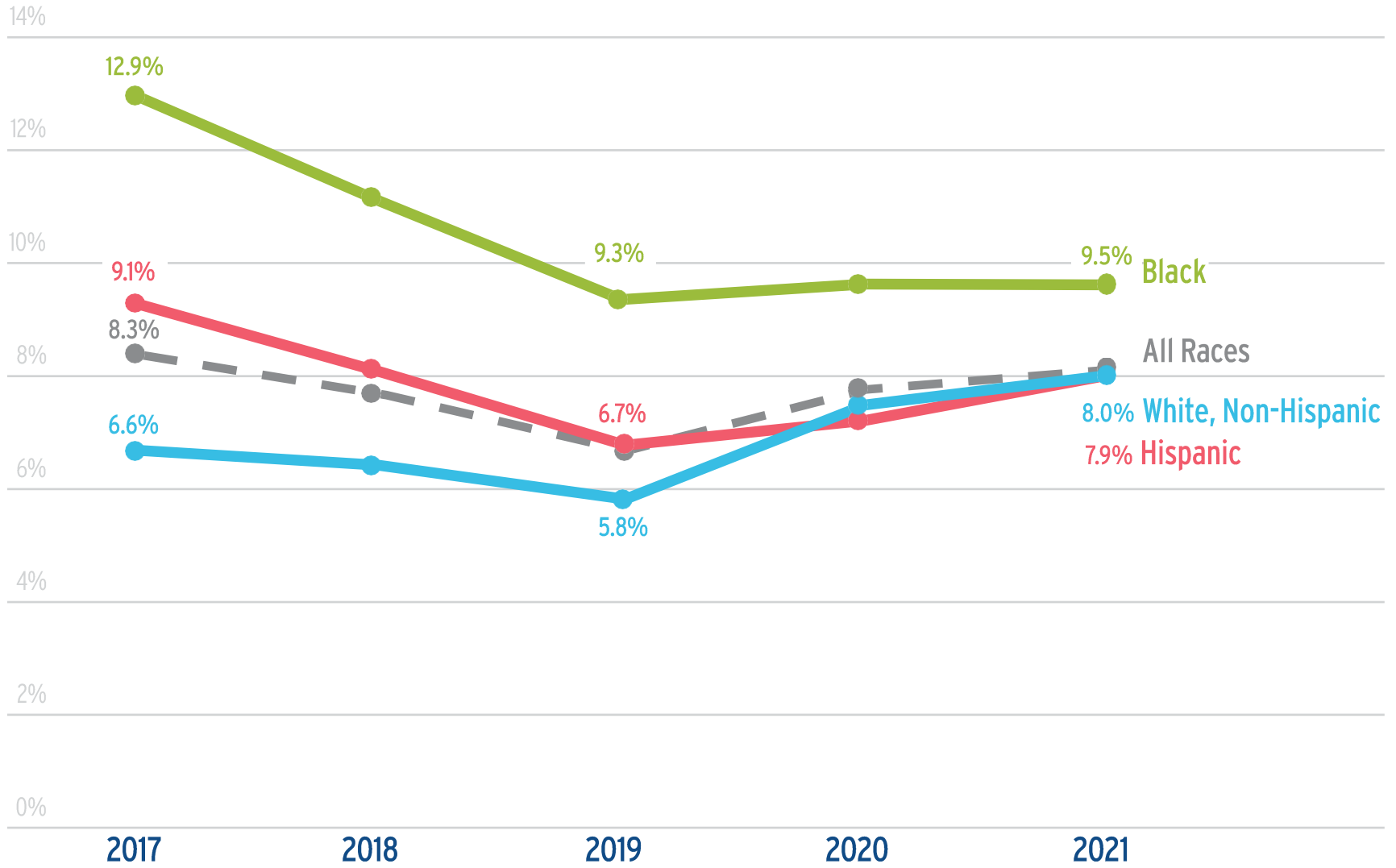
Hispanic children in New York State reported mental, emotional, developmental or behavioral problems at a higher rate than their peers.



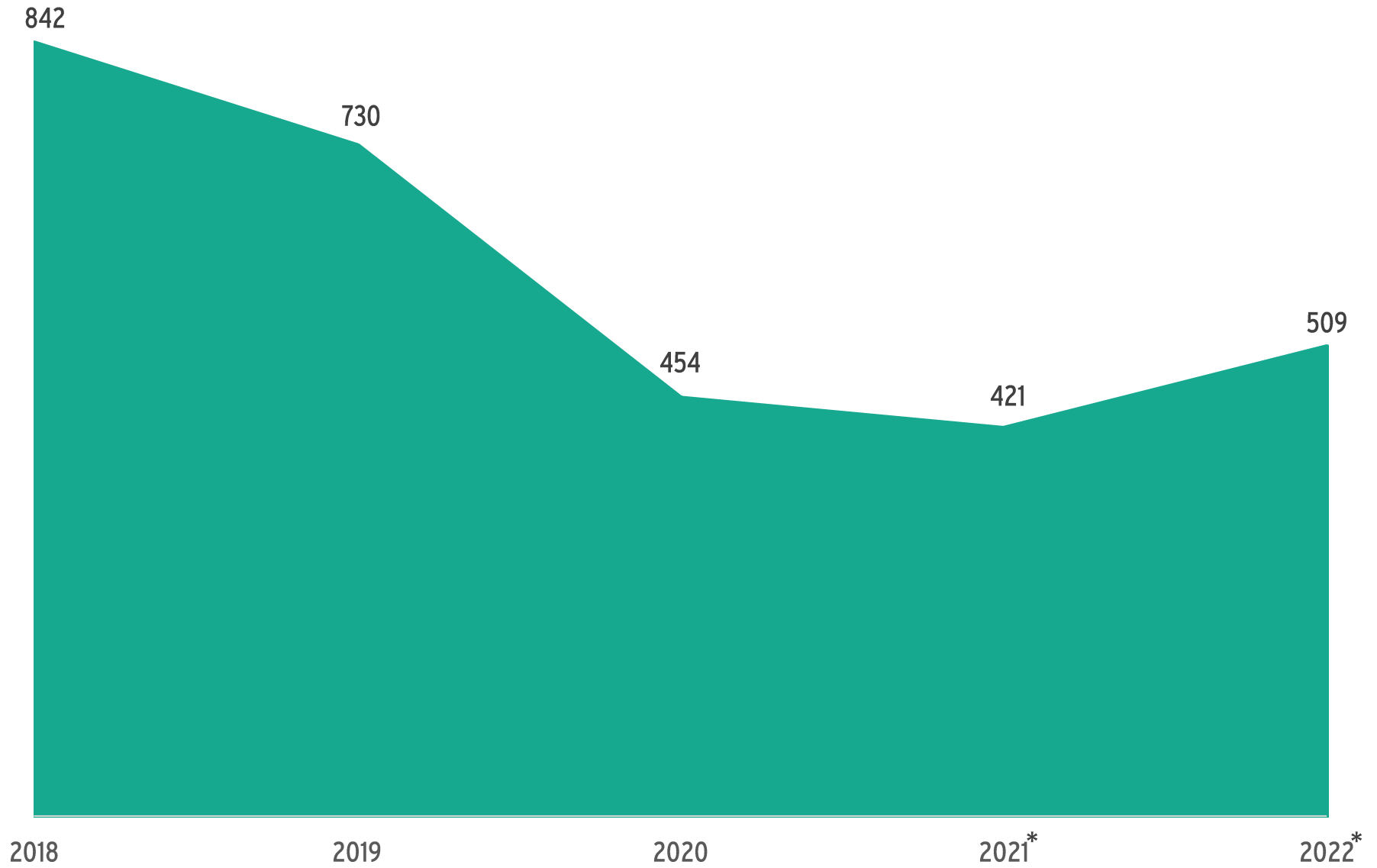
Number of Homeless Children in Westchester, NYSED v. HUD from 2017-2022



Westchester County Unemployment Rate Ages 16-24 from 2017-2021

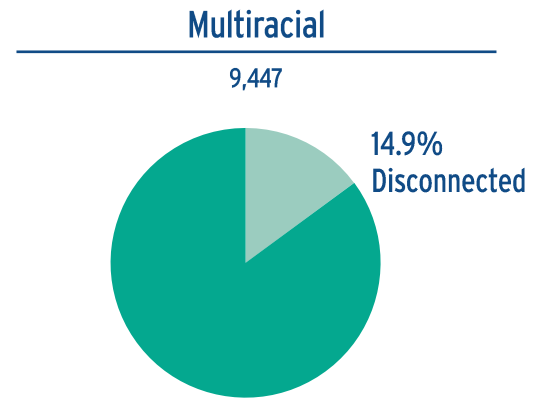
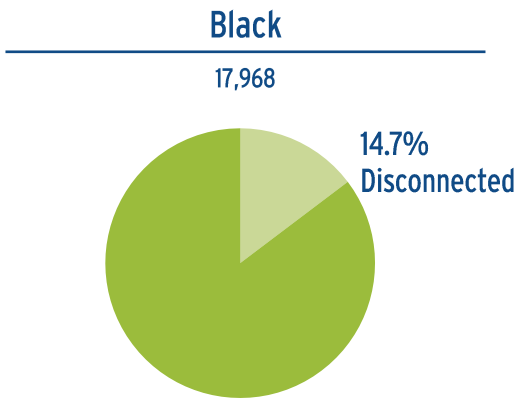
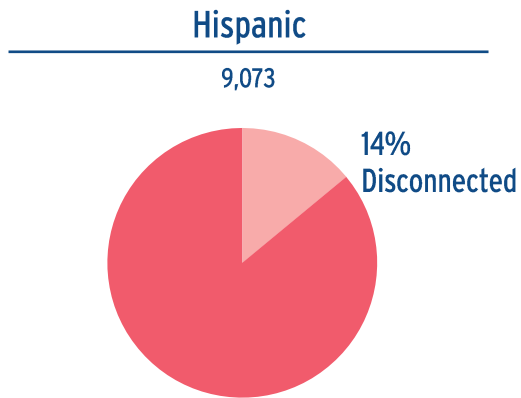
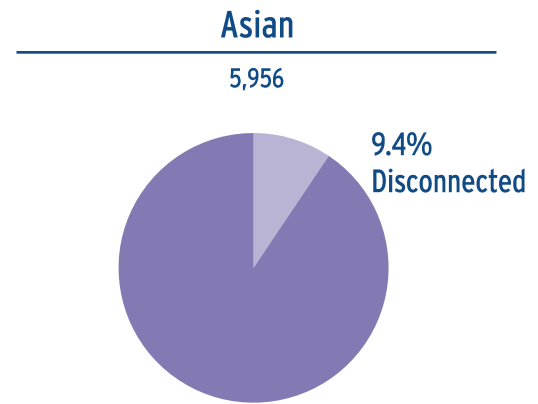
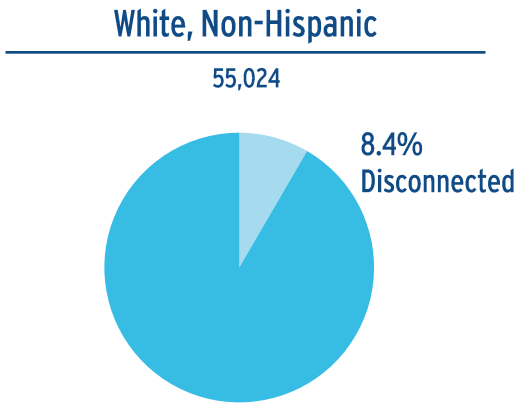
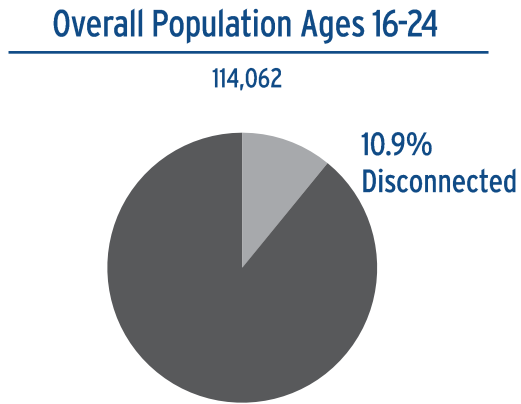


Westchester County, Arrests Involving Youth Under Age 18 (2018 - 2022)



More than one out of ten youth ages 16-24 are neither working nor enrolled in school.

Percentage of Disconnected Westchester Youth by Race 2021



CLOSING REMARKS

Allison Lake
Executive Director



WESTCHESTER
CHILDREN'S
ASSOCIATION

Children's Champions

Since 1914

THANKS YOU!

